

Section One: Recital (60 marks)

Select three pieces from the following list (20 marks each)

As an alternative to the pieces below, candidates may perform up to 3 free choice pieces.
For guidance on selecting and approving free choice pieces please [click here](#)

Composer/Artist	Title	Book/Cat. Ref	Publisher/ Buy Here
Andersen	Scherzino	Tomplay	tomplay.com
Chopin	Nocturne in Eb	Tomplay	tomplay.com
Gaubert	Madrigal	Tomplay	tomplay.com or Enoch or IMC
Godard	Allegretto	Tomplay or Suite de Trois Morceaux	tomplay.com or Chester Music
Telemann	Sonata in G, TWV41 G9 3 rd Movt: Allegro Affettuoso and 4 th Movt: Allegro	Tomplay	tomplay.com and tomplay.com
John Williams	Schindler's List	Tomplay	tomplay.com
Indochine	J'ai demandé à la lune	Tomplay	tomplay.com
Bizet	Intermezzo/Entra'cte (Carmen)	Solos for Flute (ed. Donald Peck)	Carl Fischer
Mozart	Sonata in Bb no.5 1 st Movt: Allegro	The Flautist's Collection book 1	Kevin Mayhew
Rutter	Prelude	Suite Antique	Oxford University Press
Rae	Hard Rock Blues (solo)	40 Modern Studies	Universal Edition
Howard Blake	Dance of the Snowmen	The Snowman	Chester music
Mancini	Baby Elephant Walk	In the Pink: Mancini and Galway	Alfred
Kern	Smoke Gets in Your Eyes	Let's Face the Music (CD edition available)	Brass Wind
Parker	Buggy	Jazzed up Too	Brass Wind

Tomplay pieces often include accompaniments and can be purchased individually using the link next to each piece or via a discounted subscription for MTB teachers/learners. To learn more about Tomplay and the subscription [click here](#).

MTB Grade 6 Flute

Composer/Artist	Title	Book/Cat. Ref	Publisher/ Buy Here
Stokes	Study no.4 (solo)	Jazz Singles	Hunt Edition HE32
Hart	City Life no.3	City Life	Brass Wind Publications
Parker	Whistling Blues	Jazzed Up Too	Brass Wind Publications
Telemann	Sonata in C Major: Cantabile and Allegro	Der Getreue Musikmeister	Barenreiter HM6
Bizet ed. Peck	Entracte (Carmen)	Solos for Flute (Ed. Donald Peck)	Carl Fischer
Händel	Sonata in G Op.1 no.5 1 st and 2 nd Movts: Adagio and Allegro	N/A	Any reliable edition
Rachmaninov	Vocalise	Solos for Flute (Ed. Donald Peck)	Carl Fischer
Hernandez/Wye	El Diablo Suelto	A First Latin-American Flute Album	Novello & Co Ltd
C.P.E. Bach	Sonata in G 1 st and 2 nd Movt: Andante and Allegro	Sonatas Book 1	Barenreiter HM71
Caplet	Reverie	N/A	Lemoine
Kohler	Allegro Moderato	No.2 in Progress in Flute Playing Op.33 or No. 8 in 100 Classical studies	Chester Music <i>or</i> Universal Edition
Piazzolla	No.4	Tango Etudes for Solo Flute	Lemoine
Stokes	No.6	Jazz Singles for Flute	Hunt Edition HE32
Drouet	Allegro	No.53 in 76 Graded Studies Book 1 or No.70 in 100 Classical Studies for Flute	Faber Music <i>or</i> Universal Edition
Harris	Presto	No.60 in 76 Graded Studies Book 2	Faber Music

Section Two: Technical (25 marks)

Prepare either option 1 or 2 below

Technical Option 1

Technical Exercises:

Perform all the technical exercises required for this grade

[Go to Page](#)

PLUS

Scales from Memory:

Perform the scales from memory required for this grade from the sheet

[Go to Page](#)

Technical Option 2

Technical Exercises:

Perform all the technical exercises required for this grade

[Go to Page](#)

PLUS

Alternative to Scales from Memory:

Perform the alternative to scales from memory required from the sheet

[Go to Page](#)

Section Three: Musicianship (15 marks)

Prepare either option 1 or 2 below

Musicianship Option 1

Reading Skills:

Perform the rhythm exercises for this grade

[Go to Page](#)

PLUS

Listening Skills:

Sing the prepared aural tests for this grade

[Go to Page](#)

Musicianship Option 2

Reading Skills:

Perform the rhythm exercises for this grade

[Go to Page](#)

PLUS

Duet:

Perform the duet for this grade

[Go to Page](#)

MTB Technical Exercises

Flute

Grade 6



Exercise 1 - Slowly

ff *pp* *ff* *pp* *ff* *pp* *ff* *pp* *mf*

Exercise 2 ♩=c80

Exercise 3 ♩=c90

Exercise 4 ♩=c108

MTB Exams Scales

Flute Grade 6

For the examination perform *all* the following scales and arpeggios from memory
Play each scale and arpeggio *either* tongued *or* slurred (as requested by the examiner)

Scales ♩=96 Arpeggios ♩=112

D \flat Major Scale - 2 Octaves



E \flat Major Extended Scale



B \flat Harmonic Minor Scale - 2 Octaves



B \flat Melodic Minor Scale - 2 Octaves



B \flat Chromatic Scale - 2 Octaves



Dominant 7th in the key of D \flat - 2 Octaves



Diminished 7th on C \sharp - 2 Octaves



D \flat Major Arpeggio - 2 Octaves



B \flat Minor Arpeggio - 2 Octaves



E \flat Major Arpeggio - Extended




MTB Exams
Alternative to scales from memory
Flute
Grade 6

The following do not need to be played from memory
For the examination, perform all of the following


Scales ♩=96 Arpeggios ♩=56

Bb major scale - 2 octaves



Musical notation for the Bb major scale, spanning two octaves. The key signature has two flats (Bb and Eb), and the time signature is 4/4. The scale is written in a single line of music, starting on Bb and ending on Bb two octaves higher.

Eb major scale - extended to top Bb



Musical notation for the Eb major scale, extended to the top Bb. The key signature has three flats (Eb, Ab, and Db), and the time signature is 4/4. The scale is written in a single line of music, starting on Eb and ending on Bb.

C harmonic minor scale - 2 octaves



Musical notation for the C harmonic minor scale, spanning two octaves. The key signature has no sharps or flats, and the time signature is 4/4. The scale is written in a single line of music, starting on C and ending on C two octaves higher.

C melodic minor scale - 2 octaves



Musical notation for the C melodic minor scale, spanning two octaves. The key signature has no sharps or flats, and the time signature is 4/4. The scale is written in a single line of music, starting on C and ending on C two octaves higher.

F harmonic minor scale - 2 octaves



Musical notation for the F harmonic minor scale, spanning two octaves. The key signature has two flats (Bb and Eb), and the time signature is 4/4. The scale is written in a single line of music, starting on F and ending on F two octaves higher.

Bb chromatic scale - 2 octaves



Musical notation for the Bb chromatic scale, spanning two octaves. The key signature has two flats (Bb and Eb), and the time signature is 4/4. The scale is written in a single line of music, starting on Bb and ending on Bb two octaves higher. The notes are grouped in triplets.



Musical notation for the Bb chromatic scale, spanning two octaves (continued). The key signature has two flats (Bb and Eb), and the time signature is 4/4. The scale is written in a single line of music, starting on Bb and ending on Bb two octaves higher. The notes are grouped in triplets.

Diminished 7th on F - 2 octaves



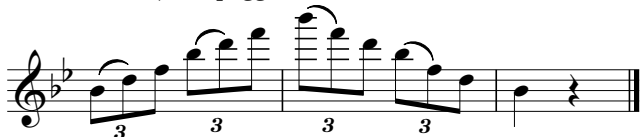
Musical notation for the diminished 7th chord on F, spanning two octaves. The key signature has two flats (Bb and Eb), and the time signature is 4/4. The scale is written in a single line of music, starting on F and ending on F two octaves higher.

Diminished 7th on G - 2 octaves



Musical notation for the diminished 7th chord on G, spanning two octaves. The key signature has one flat (Bb), and the time signature is 4/4. The scale is written in a single line of music, starting on G and ending on G two octaves higher.

Bb major arpeggio - 2 octaves



Musical notation for the Bb major arpeggio, spanning two octaves. The key signature has two flats (Bb and Eb), and the time signature is 4/4. The arpeggio is written in a single line of music, starting on Bb and ending on Bb two octaves higher.

C minor arpeggio - 2 octaves



Musical notation for the C minor arpeggio, spanning two octaves. The key signature has no sharps or flats, and the time signature is 4/4. The arpeggio is written in a single line of music, starting on C and ending on C two octaves higher.

Flute 1
Flute 2

MTB Grade 6 Flute Duet - Mov. 1 from 3 Petits Duos Faciles



Gaspard Kummer Op.20

Andante con moto ♩ = 120

Measures 1-7 of the score. The music is in 3/4 time with a key signature of one sharp (F#). The tempo is Andante con moto with a quarter note equal to 120 beats per minute. The piece begins with a piano (*p*) dynamic. The notation shows two staves for Flute 1 and Flute 2, with various articulations and dynamics.

Measures 8-14 of the score. The music continues with a mezzo-forte (*mf*) dynamic in measure 8, which then increases to a forte (*f*) dynamic by measure 14. The notation includes slurs and accents.

Measures 15-21 of the score. The music maintains a forte (*f*) dynamic throughout this section. The notation features complex rhythmic patterns and slurs.

Measures 22-27 of the score. The music starts with a piano (*p*) dynamic in measure 22 and includes a crescendo (*cresc.*) marking in measure 25. The notation shows a gradual increase in volume.

Measures 28-34 of the score. The music begins with a forte (*f*) dynamic in measure 28 and continues with a strong, sustained sound. The notation includes slurs and dynamic markings.

Flute 1, Flute 2

33

p

p *p*

39

f

45

p

51

mf

mf

55

f *p*

f *p*

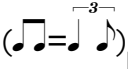
MTB Exams - Reading Skills

Grade 6

Candidates should practise the six clapping exercises below as part of their preparation to take this grade.

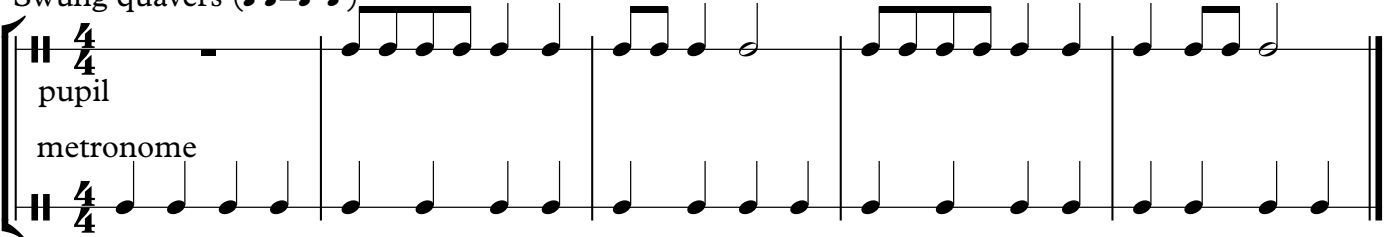
For the exam itself, the candidate should perform all six exercises. The exercises should be performed at a variety of tempi either using the recording for this grade 'mtb exams reading skills - recording' which can be downloaded from the website or using a metronome.

1

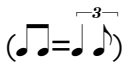
Swung quavers (♩=♩) 

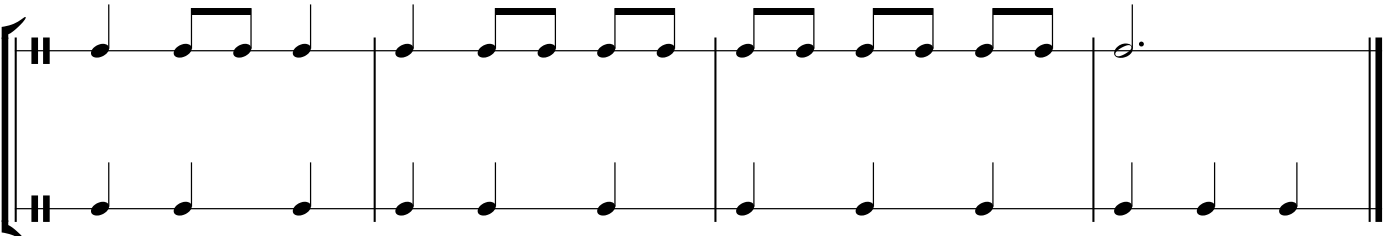
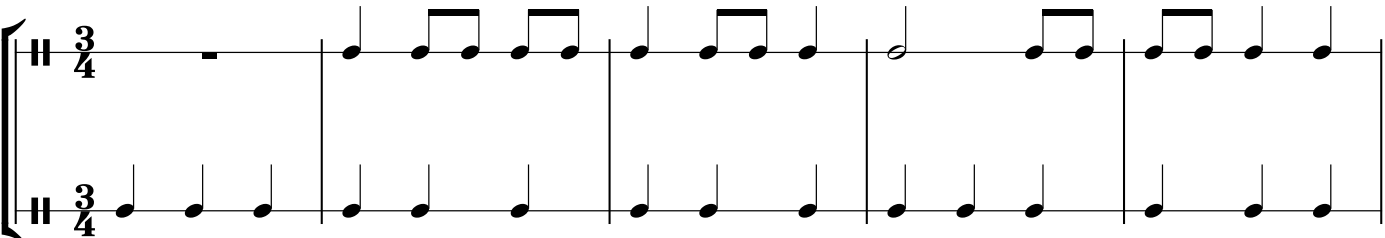
pupil

metronome

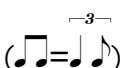


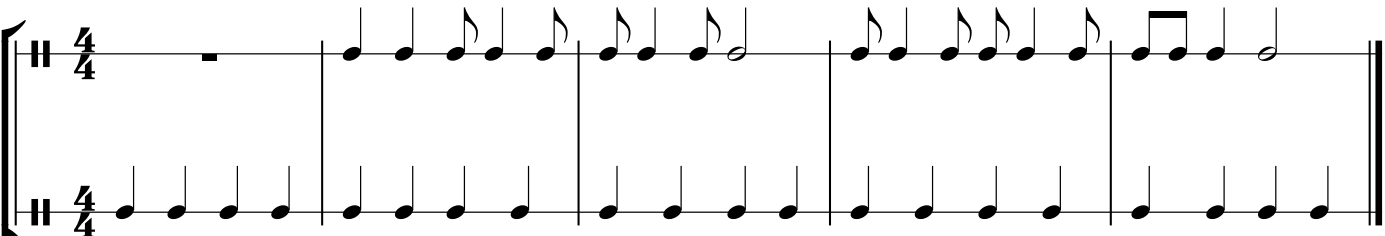
2

Swung quavers (♩=♩) 



3

Swung quavers (♩=♩) 



2

Swung quavers (♩♩=♩♩)

4

Swung quavers (♩♩=♩♩)

5

Swung quavers (♩♩=♩♩)

6

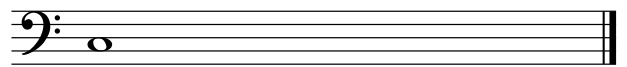
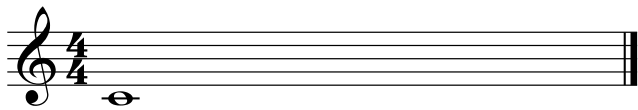
MTB Exams - Listening Skills (Aural tests) Grade 6

The candidate should practise all the exercises on this sheet with the accompanying Listening Skills recording as part of their preparation for the exam. The exam can be conducted either with the candidate responding to the recording or the teacher can deliver them using this sheet.

Only the teacher should have this sheet in front of them during the exam.
For each test, select *either* the treble *or* the bass clef exercises as appropriate to the range of the candidate's voice.

Test 1 - Triads.

I shall ask you to sing an ascending major triad in root position, after I give you the starting note. Then, I shall ask you to sing an ascending minor triad, after I give you the starting note again.

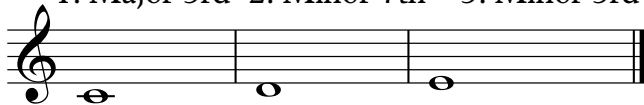


Test 2 - Intervals.

I will play a note and ask you to sing a specific interval above. We shall do this for 3 different intervals.

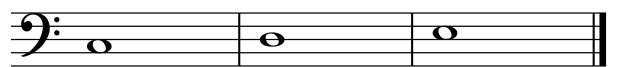
Treble Clef

1. Major 3rd 2. Minor 7th 3. Minor 3rd



Bass Clef

1. Major 3rd 2. Minor 7th 3. Minor 3rd



Test 3 - Singing upper and lower notes.

I shall play a 2 note interval and then you will sing the higher and lower note. We shall do this 4 times.

Treble Clef

1. 2. 3. 4.



Bass Clef

1. 2. 3. 4.

